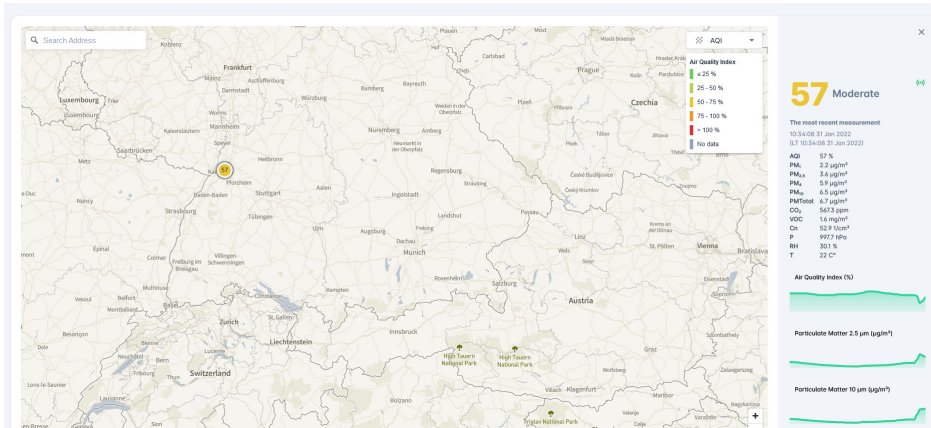


Devices on Map



We make air quality visible: by measuring it with our high-precision instruments* and collecting and visualizing it via our cloud-based data platform.

MyAtmosphere is a comprehensive solution for effective and efficient air quality information management – from data collection to communication with third parties. Whether it's air pollution caused by urban traffic, construction sites, industry, landfills, or open pit mining: With MyAtmosphere, you can easily monitor, understand and document air quality.

*Instruments are not included.

OPERATION PRINCIPLE

As a cloud-based data platform, MyAtmosphere enables the monitoring, documentation, and visualization of air quality parameters.

- Automatic visualization of measurement data with export function (svg, png)
- Intuitive site management for devices and data
- Simple measurement data comparisons between sites
- Alarming (e-mail) according to individually adjustable limit values
- (Requires internet connection of the device)
- Convenient data export for further analysis based on a selection of location, time period, parameters, data aggregation
- Standardized integration with third-party solutions through optional API

Learn more about our air quality monitoring equipment rental solution - if you want with MyAtmosphere.¹

¹ Learn more about our air quality monitoring equipment rental solution - if you want with MyAtmosphere.: <https://www.palas.de/>

Devices on Map

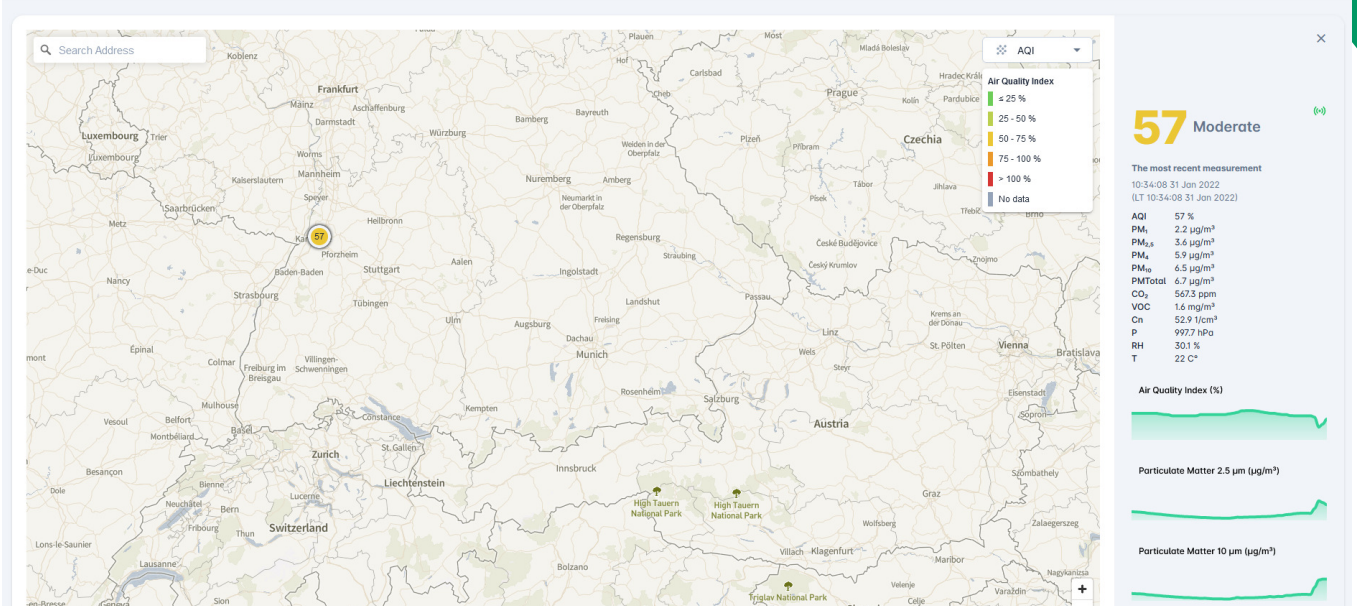


Fig. 1: Display of devices on map

PM2.5 February 2023 < Previous Today > Next

Monday	Tuesday	Wednesday	Thursday	Friday	Saturday	Sunday
30 2.2 µg/m ³	31 2.0 µg/m ³	1 1.9 µg/m ³ 1 🕒	2 1.4 µg/m ³ 1 🕒	3 0.7 µg/m ³	4 0.5 µg/m ³	5 1.1 µg/m ³
6 1.6 µg/m ³	7 2.8 µg/m ³	8 4.7 µg/m ³ ⚠️ 4 🕒 12 🕒	9 5.2 µg/m ³ ⚠️ 2 🕒 7 🕒	10 5.4 µg/m ³ ⚠️ 1 🕒 2 🕒	11 2.8 µg/m ³	12 3.1 µg/m ³
13 3.1 µg/m ³ ⚠️ 1 🕒 1 🕒	14 3.5 µg/m ³	15 4.0 µg/m ³	16 4.0 µg/m ³	17 1.8 µg/m ³	18 0.5 µg/m ³	19 0.3 µg/m ³
20 1.8 µg/m ³	21 2.2 µg/m ³ 4 🕒	22 -- µg/m ³	23 -- µg/m ³	24 -- µg/m ³	25 -- µg/m ³	26 -- µg/m ³
27 -- µg/m ³	28 -- µg/m ³	1 -- µg/m ³	2 -- µg/m ³	3 -- µg/m ³	4 -- µg/m ³	5 -- µg/m ³

Fig. 2: Display of daily measurements per day in the calendar

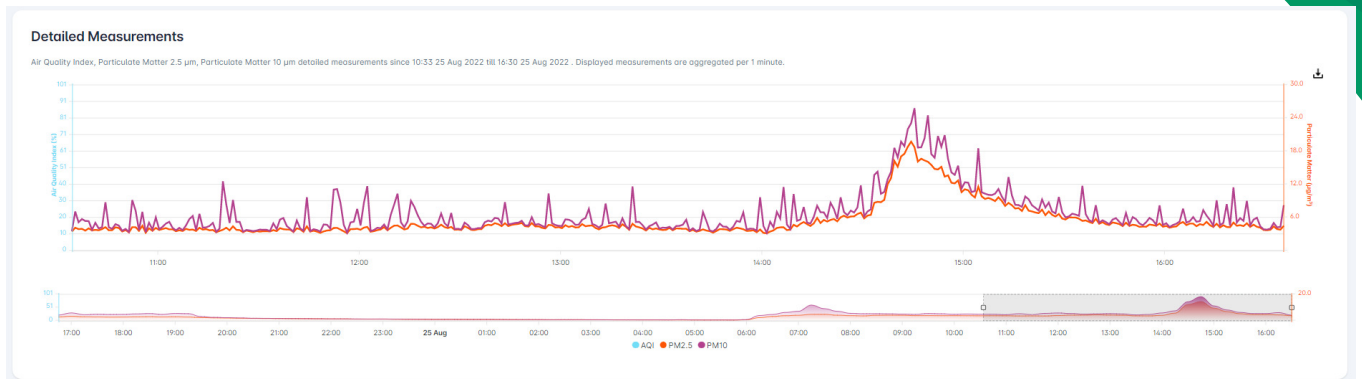


Fig. 3: Display of detailed measurements

BENEFITS

- Comprehensive know-how of the Palas aerosol experts
- High-precision and smart measuring instruments
- Cloud-based acquisition, analysis and documentation of your collected data
- Intuitive visualization software
- Save time and money: no third-party software required for visualization and communication
- Access data from anywhere, at any time – with any device
- Simplified management of multiple monitoring projects
- Integration and remote management of Palas instruments*

*Not included in MyAtmosphere.

DATASHEET

Reported data	PM ₁ , PM _{2.5} , PM ₄ , PM ₁₀ , PM _{total} , C _N , CO, CO ₂ , O ₃ , SO ₂ , NO ₂ , X50, LD-SA, pressure, temperature, rel. humidity, wind parameter, ...(depending on device)
Data logger storage	1-minute-average for 24 h, 15-minute-average for 2 years

APPLICATIONS

- Network with roads, rails & ports
- Smart city
- Open pit mining & landfills
- Construction sites
- Industry
- Natural risk areas



Mehr Informationen:
<https://www.palas.de/product/MyAtmosphere>